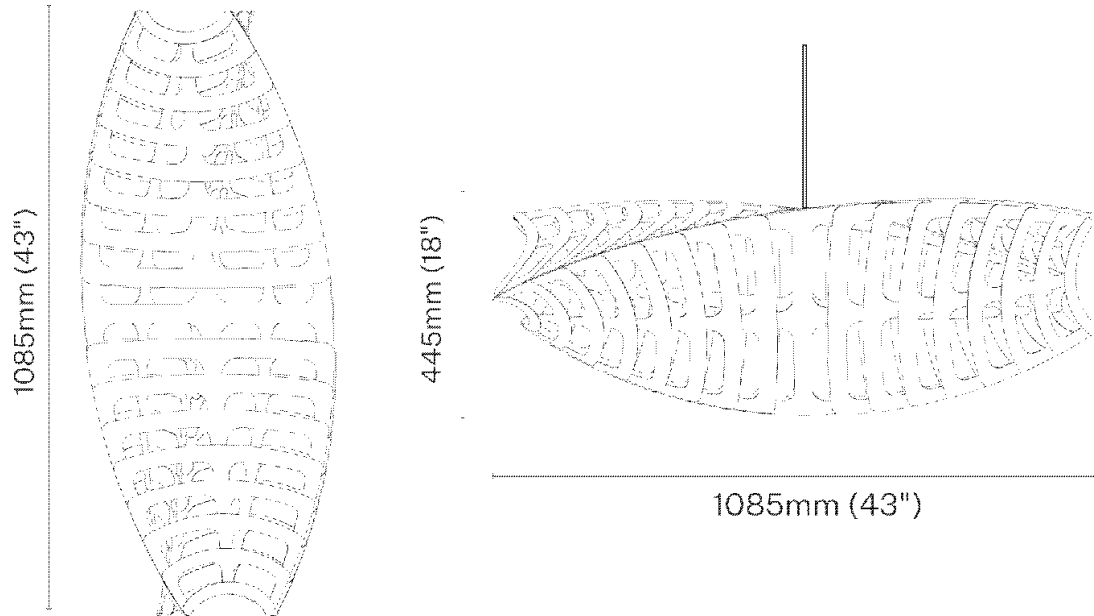




# Dimensions

---



1100mm/43"

Primary Material

Dimensions

Fixture Weight

Lamp Required

Package Dimensions

Package Weight

Cord length

Bamboo plywood

1085mm (43") l x 380mm (15") w x 445mm (18") h

1.4kg (3lb)

1 x E27or E26 (US)

470mm (19") x 175mm (7") x 135mm (5")

2.3kg (5.07lb)

1 x 2000mm or 10ft (US)

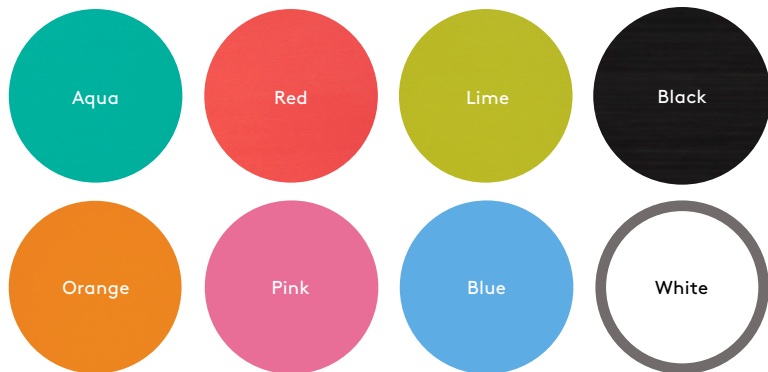
# Finishes

We offer 12 stock finish options for Toru. We use low VOC acrylic paint and it is most commonly used on the interior of the light. We can also produce lights in other finishes or colours by special order. All lights are made from sustainably grown bamboo plywood sourced from an FSC accredited factory.

## Raw finish:



## Painted 1 Side:

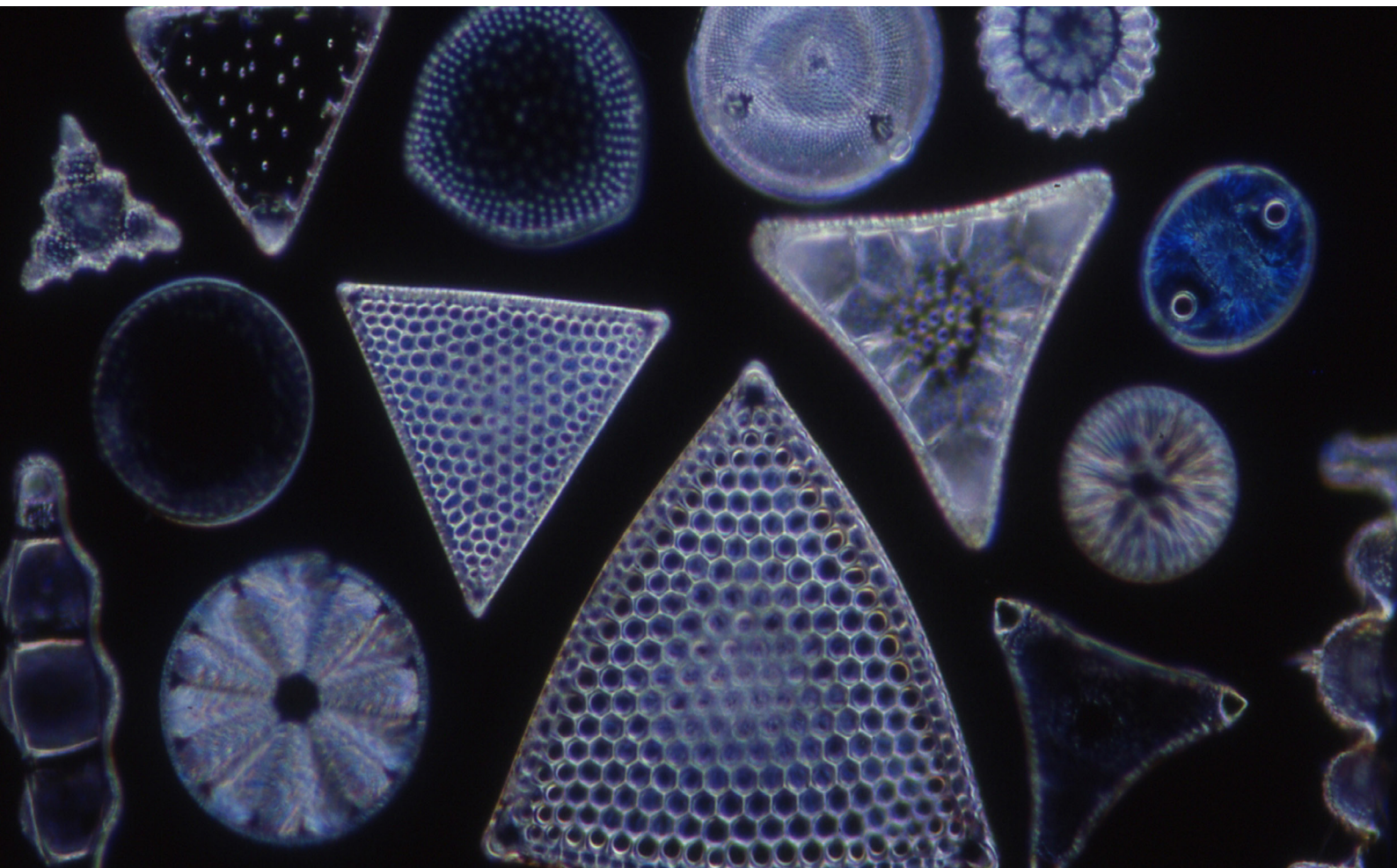


## Painted 2 Sides: (inside and outside)



# Story

Toru is inspired by microscopic diatoms which live in water and produce 50% of the air we breathe. Based on our award-winning Navicula feature light, it is crafted from strong, multi-layered bamboo plywood creating a natural skeletal skin. The light is designed to have functional downward lighting as it can be installed either horizontally or vertically. Toru is ideal for over a dining table, a lounge, a foyer, in a reception or as a corner statement piece.



# Shadows



# Visualisations



# Structure

Toru lights are made from bamboo plywood which is a hard wearing high quality material. It is also highly sustainable due to its rapid growth. The bamboo we use is a secondary product from the food industry.

